

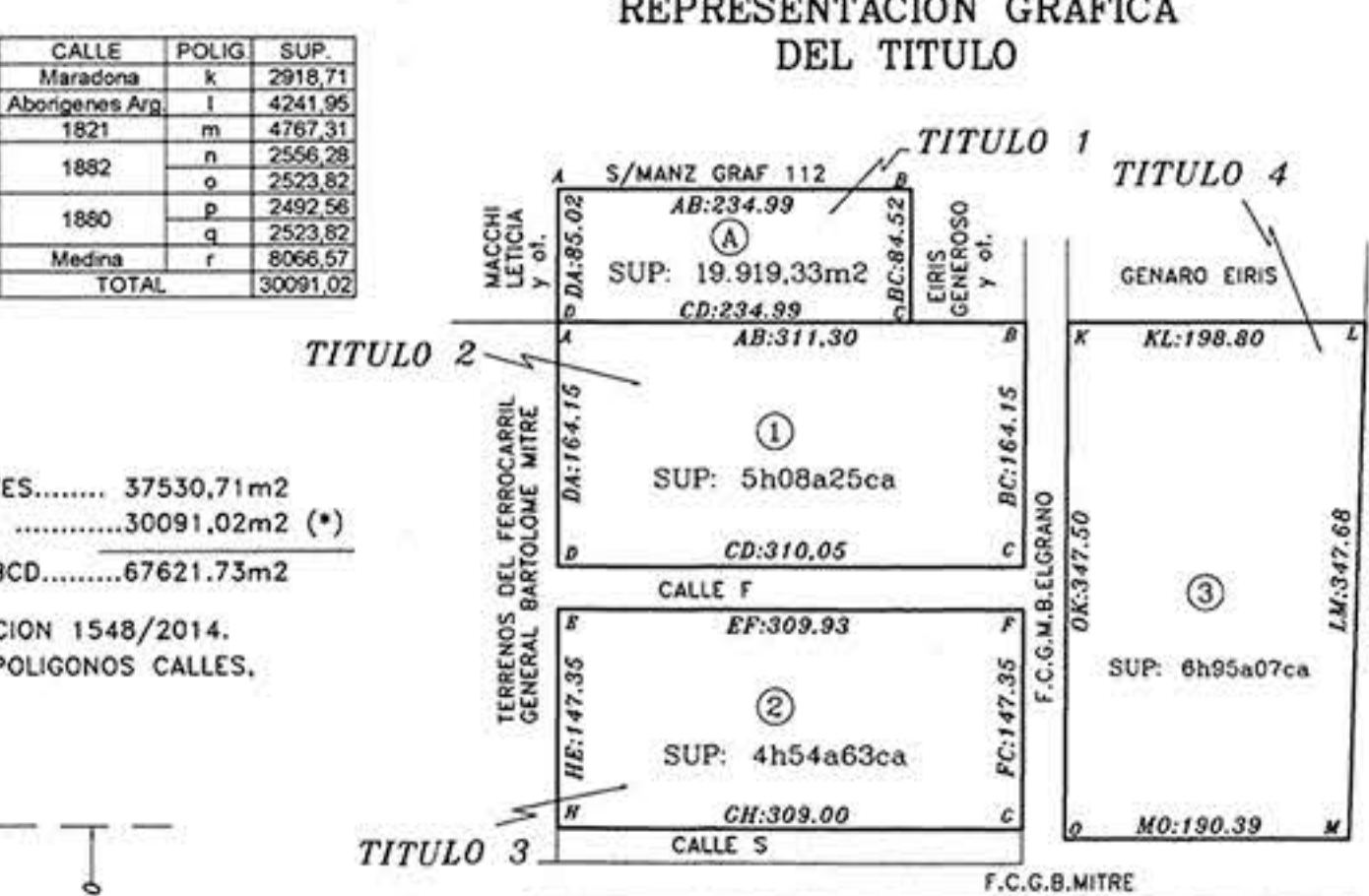
DETALLES DE EMPADRONAMIENTO Y DOMINIOS

Table with columns: TITULO, PII, PARCELA, TOMO, FOLIO, NUMERO, FECHA. Contains registration details for parcels 1, 2, 3, 4.

SUPERFICIES DE CALLES [m2]

Table with columns: CALLE, POLIG, SUP. Lists street areas for Calle Maradona, Calle Camilo Aldao, Calle Felipe Mora, Calle Matzeno, Calle Polig.

REPRESENTACION GRAFICA DEL TITULO



PLANILLA DE COORDENADAS GEODESICAS

Table with columns: PUNTO, LATITUD, LONGITUD. Lists geodesic coordinates for various points in the plan.

SUPERFICIES DE LOTES [m2]

Table with columns: LOTE, SUPERFICIE. Lists lot areas for lots 1 through 60.

DETALLE DE SUPERFICIES S/MENSURA

Table with columns: Poligono, SUP. S/M TOTAL LOTES, SUP. TOTAL CALLES. Provides summary data for polygons JKLMO, EFGH, and ABCD.

REFERENCIAS Y ABBREVIATURAS

Text block providing references and abbreviations for the plan, including symbols for roads, boundaries, and other features.

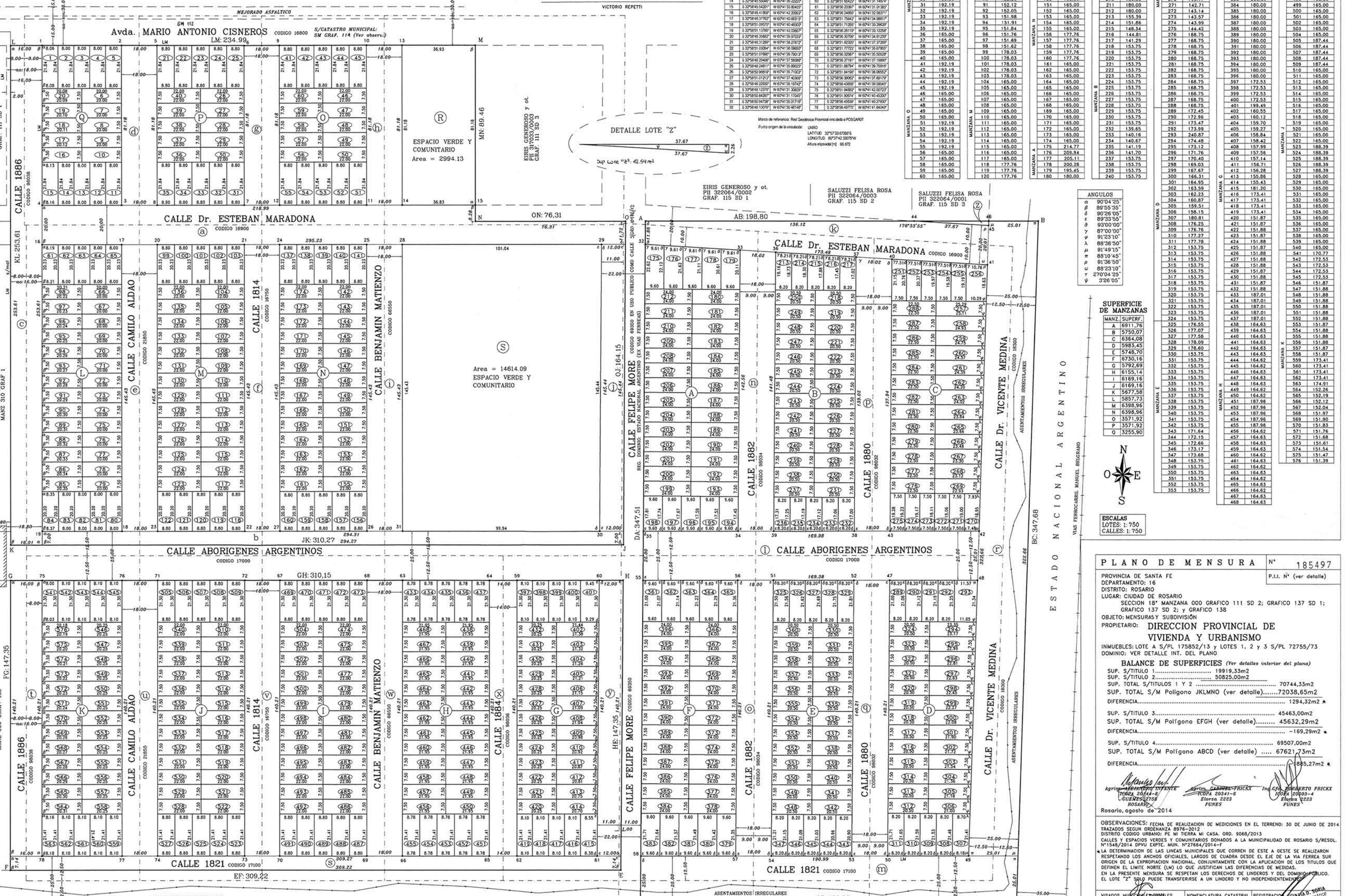
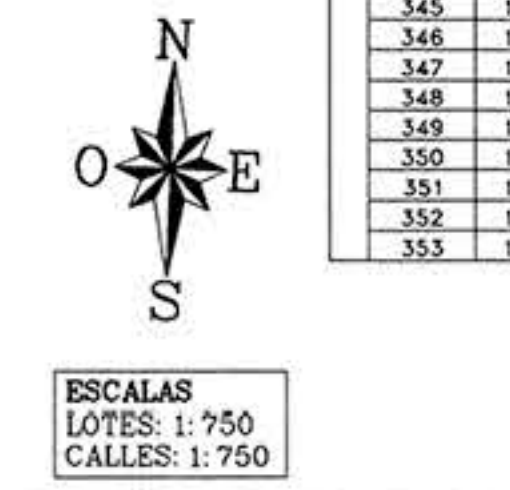


Table titled 'SUPERFICIE DE MANZANAS' listing areas for various blocks (MANZANA A through MANZANA Z).



PLANO DE MENSURA N° 185497

Formal measurement plan details including province, department, district, and specific lot information. Includes signatures and dates.

Official registration stamp from the National Cadastral Office, including date (08 OCT 2014) and plan number (185497).